



**Made to fit.**

ENGLISH



Dealer must review this Warranty Guide with the purchaser(s) and return the completed Thor Motor Coach Product Warranty Registration Form to Thor Motor Coach within 15 days of vehicle delivery.

# WARRANTY *GUIDE*

CLASS A AND CLASS C MOTORHOMES





# WARRANTY *GUIDE*

## CLASS A AND CLASS C MOTORHOMES

Thor Motor Coach (TMC) is the only Made to Fit® motorhome brand in North America. TMC's diverse product lineup includes many of the world's most recognized motorhome brands. As an industry leader in innovative design, TMC builds a variety of unique styles, sizes and floor plans that feel custom-made; at a truly competitive price.

TMC's goal is to provide you with an excellent ownership experience with your new motorhome. Your selling dealership also wants you to be completely satisfied and invites you to return for all your service needs, both during and after the warranty period.

We thank you for choosing Thor Motor Coach. For more information, visit [thormotorcoach.com](http://thormotorcoach.com) or call 800-860-5658.

### About This Warranty Guide

This Warranty Guide contains important information about your Thor Motor Coach Class A (gas or diesel) or Class C (gas or diesel) motorhome's Limited Warranty and Structural Limited Warranty. It also contains other important information you need to know as a new motorhome owner.

**Additionally, this Warranty Guide includes a Registration Form that you and the dealership need to fill out, sign, and return to TMC within 15 days of vehicle delivery to ensure you receive timely warranty repairs and all communications, including any recall campaigns. TMC's failure to receive the Warranty Registration will not affect your warranty if you can present proof of purchase and the delivery date.**

Please read and review this TMC Warranty Guide with your selling dealer and ask any questions you may have regarding this warranty and/or warranty coverage. If, after reviewing this document with your selling dealer, you still have questions or concerns about the TMC Limited Warranty and TMC Structural Limited Warranty, please contact Thor Motor Coach Customer Care. Factory representatives will be able to guide you through the warranty coverage, warranty period, and warranty registration process, along with warranty claims and service information.

Keep this Warranty Guide and your TMC Owner's Manual with your vehicle and make them available to your dealership or repair shop if warranty work is needed. Be sure to keep this document with your vehicle if you sell it so that future owners will have this information available to them.

Thor Motor Coach (TMC) reserves the right to make changes in vehicles built and/or sold at any time without incurring any obligations to make the same or similar changes on vehicles previously built and/or sold by TMC. Safety and operational information pertaining to the factory-installed components and systems is available to the motorhome's owner via the on-line TMC Owners Resource document service or through the component manufacturer's website. If you, the purchaser, have any questions or concerns regarding this Warranty Guide, component manufacturer's instructions, component manufacturer's warranties, or you need assistance with obtaining component manufacturer information, please contact your selling dealership or call Thor Motor Coach Customer Care: 877-855-2867 (EST-Indiana).



# Table of Contents

Thor Motor Coach® Class A and Class C Warranty Guide . . . . .	<a href="#">1</a>
About This Warranty Guide . . . . .	<a href="#">1</a>
Information for the New Owner . . . . .	<a href="#">3</a>
Owner and Vehicle . . . . .	<a href="#">3</a>
Thor Motor Coach Customer Care . . . . .	<a href="#">3</a>
Dealership Assistance . . . . .	<a href="#">3</a>
TMC Online Customer Support . . . . .	<a href="#">3</a>
Customer Satisfaction Process . . . . .	<a href="#">4</a>
California Consumers: . . . . .	<a href="#">4</a>
Consumidores de California: . . . . .	<a href="#">4</a>
Chassis Manufacturer Delayed Warranty Registration . . . . .	<a href="#">5</a>
Component Manufacturer's Warranty Registrations . . . . .	<a href="#">5</a>
Change of Address or Ownership . . . . .	<a href="#">6</a>
Thor Motor Coach® Recreational Vehicle Privacy Notice . . . . .	<a href="#">6</a>
Thor Motor Coach® Limited Warranty: Class A and Class C Motorhomes . . . . .	<a href="#">7</a>
This Limited Warranty Covers . . . . .	<a href="#">7</a>
Limitation and Disclaimer of Implied Warranties . . . . .	<a href="#">7</a>
Disclaimer of Consequential and Incidental Damages . . . . .	<a href="#">8</a>
What Is Not Covered . . . . .	<a href="#">8</a>
Coverage Ends . . . . .	<a href="#">9</a>
Full-time, Residential, or Business Use Warranty Restriction . . . . .	<a href="#">9</a>
Repairs and Maintenance . . . . .	<a href="#">9</a>
Events That Discharge Thor Motor Coach's Obligations Under Warranty . . . . .	<a href="#">10</a>
Legal Remedies . . . . .	<a href="#">10</a>
Repair Remedy . . . . .	<a href="#">10</a>
How To Get Service . . . . .	<a href="#">11</a>
Thor Motor Coach® Structural and Lamination Limited Warranty: Class A and Class C Motorhomes . . . . .	<a href="#">13</a>
This Structural and Lamination Limited Warranty Covers . . . . .	<a href="#">13</a>
Limitation and Disclaimer of Implied Warranties . . . . .	<a href="#">13</a>
Disclaimer of Consequential and Incidental Damages . . . . .	<a href="#">14</a>
What is Covered . . . . .	<a href="#">14</a>
Requirements to Retain Warranty Coverage . . . . .	<a href="#">15</a>
Full-time, Residential, or Business Use Warranty Restriction . . . . .	<a href="#">15</a>
Events That Discharge Thor Motor Coach's Obligations Under Warranty . . . . .	<a href="#">15</a>
Legal Remedies . . . . .	<a href="#">16</a>
Repair Remedy . . . . .	<a href="#">16</a>
How To Get Service . . . . .	<a href="#">17</a>
Examples of TMC Structural Construction . . . . .	<a href="#">17</a>
Warranty Service and Inspection Forms . . . . .	<a href="#">19</a>
Warranty Service Log . . . . .	<a href="#">19</a>
Warranty Inspection Log . . . . .	<a href="#">19</a>
Maintenance Schedule for 12 Year Structural / 6 year Lamination Warranty . . . . .	<a href="#">20</a>
Thor Motor Coach® Warranty Inspection Form . . . . .	<a href="#">21</a>
Thor Motor Coach® Product Warranty Registration Form . . . . .	<a href="#">23</a>

# Information for the New Owner



## Owner and Vehicle

Owner's Name:

Phone Numbers, Cell:

Home:

Other:

Street Address:

City State, Zip, Country

Vehicle Identification Number (17-Digit VIN):

Thor Motor Coach Serial Number:

Date Vehicle First Delivered or Placed into Use:

Odometer Reading on Date Vehicle First Delivered or Placed into Use:

Selling Dealership Name:

Selling Dealership Phone Number:

## Thor Motor Coach Customer Care

If you have any comments, questions, or concerns regarding your TMC motorhome, please contact TMC Customer Care:

Mailing Address (Dirección postal): **Thor Motor Coach**  
**P.O. Box 1486**  
**Elkhart IN**  
**46515-1486 USA**

Email (Correo electrónico): [wsupport@tmcv.com](mailto:wsupport@tmcv.com)

Toll Free (Teléfono gratuito): **877-855-2867 M-F, 8:00am to 5:00pm EST**

Website (Sitio web): [thormotorcoach.com/company/contact-us](http://thormotorcoach.com/company/contact-us)

## Dealership Assistance

Your selling dealership has a vested interest in your continued satisfaction. They are responsible for pre-delivery servicing and are best equipped to provide for your motorhome's continued service needs. TMC recommends that your selling dealership perform all inspection, warranty and maintenance services. Some dealerships may be authorized service centers for individual component and part manufacturers, whose factory-installed products are warranted separately and excluded from Thor Motor Coach's Limited Warranty.

**NOTE to Dealer/Service Center:** Obtain annual inspection documents from TMC Customer Service: **877-855-2867**.

## TMC Online Customer Support

Specific operational and maintenance instructions for the systems and factory-installed components of your motorhome, along with helpful How-To videos, are available on-line through the TMC Owners Resource.

This service is complementary to owners of TMC motorhomes. Create a user account by entering your contact information and your motorhome's 17-digit Vehicle Identification Number (VIN). The site will return to you a list of instructional manuals and quick-start guides associated to the factory installed components of your individual motorhome. Documents are provided in a viewable, download-able, and printable .pdf format.



[www.thormotorcoach.com/owners](http://www.thormotorcoach.com/owners)



## Customer Satisfaction Process

Your satisfaction and goodwill are important to your selling dealership and to TMC. Normally, your selling dealership's sales and/or service departments will resolve any concerns with the sales transaction or the operation of your vehicle. However, despite the best intentions, misunderstandings can occur. If your concern has not been resolved to your satisfaction, the following steps should be taken:

### Step One:

Discuss your concern with a member of the dealership's management.

### Step Two:

If, after contacting a member of the dealership's management, it appears your concern cannot be resolved by the dealer without further help, contact the Thor Motor Coach Customer Care Center by calling our toll free number: **877-855-2867**.

A TMC Customer Care Representative will carefully review all the facts involved and let you know what further action will be taken in conjunction with the selling dealership or authorized repair center. Please have the following information available:

- Your name, location, and telephone number
- Your motorhome's 17-digit vehicle identification number (VIN)
- TMC serial number
- Date of purchase
- Current odometer reading
- Name of the selling dealership
- Name, address, and phone number of the dealership or repair shop servicing your motorhome
- Details of the concern
- If applicable, the component appliance description (including model and serial numbers)

### Step Three:

The goal of both TMC and your selling dealership is for you to be completely satisfied with your new vehicle. However, if you continue to remain unsatisfied after following the procedures outlined in Steps One and Two, and if you do not agree with the decision in your case, you may reject it and proceed in an appropriate venue for relief available to you.

Another option available to you is the Dispute Resolution Program. For further information, please contact:

#### **DeMars & Associates**

email: [info@demarsassociates.com](mailto:info@demarsassociates.com)

website: <https://www.demarsassociates.com/rv-warranty-dispute-program>

## California Consumers:

Thor Motor Coach has elected to follow the procedures described in CA Code of Civil Procedure, Section 871.20, et seq., regarding pre-litigation notice requirements for consumer claims brought pursuant to the Song-Beverly Consumer Warranty Act. To comply with these pre-litigation notice requirements (described at CA Code of Civil Procedure, Section 871.24), written notice can be sent to Thor Motor Coach, to the attention of Consumer Affairs - either via email or by certified or registered mail. Please include an address where a confirmation receipt can be sent to you. Please use the email or mailing address listed on the previous page.

## Consumidores de California:

Thor Motor Coach ha elegido seguir los procedimientos descritos en el Código de Procedimiento Civil de California, Sección 871.20, y lo siguiente, con respecto a los requisitos de notificación previa al litigio para reclamos de consumidores presentados de conformidad con la Ley de Garantía del Consumidor Song-Beverly. Para cumplir con estos requisitos de notificación previa al litigio (descritos en el Código de Procedimiento Civil de California, Sección 871.24), se puede enviar una notificación por escrito a Thor Motor Coach, a la atención del departamento de Asuntos del Consumidor (Consumer Affairs), ya sea por correo electrónico o por correo certificado o registrado. Por favor incluya una dirección donde se le pueda enviar un recibo de confirmación. Por favor, utilice la dirección de correo electrónico o la dirección postal indicada en la página anterior.



## Chassis Manufacturer Delayed Warranty Registration

**IMPORTANT!** It is the selling dealership's responsibility to register the chassis with the appropriate chassis manufacturer. To help improve overall customer satisfaction, it is critical these forms are completed once the retail sale is made.

Failure to submit the form to the chassis manufacturer at the time of delivery will reduce warranty coverage to the purchaser by the time and mileage that has accumulated since the chassis was delivered to TMC. In addition, the National Highway Transportation Safety Administration (NHTSA) requires all vehicles to be registered with the final stage manufacturer as well as the chassis manufacturer. In addition, because the National Highway Transportation and Safety Administration (NHTSA) requires manufacturers to maintain contact information for purchasers of TMC vehicles, your submittal of the registration allows TMC to fulfill that requirement.

### CHEVROLET:

The dealership must submit a completed paper copy Delayed Warranty Dealer Form to General Motors (GM) Fleet by email to:

[delayedwarrantystart@gm.com](mailto:delayedwarrantystart@gm.com)

Contact TMC Customer Care at **877-855-2867** EST-Indiana for the BAC code.

You can find the form under the 'Warranty & Service' section at: <https://www.gmenvolve.com/resources/fleet-tools>

Contact GM's Fleet Action Center at **800-353-3867, Prompt #4** for further assistance.

### FORD:

The dealership must register and request a Delayed Warranty Start Date and/or In-Transit Mileage Accumulation warranty coverage extension. Request a new submission under 'WSD Submissions Request' at: <https://fordwsd.com/>

### FREIGHTLINER:

The dealership must submit a completed Warranty Start Form (WAR275) Guide by email to: [Warrantydept@daimlertruck.com](mailto:Warrantydept@daimlertruck.com)

Locate the Delayed Warranty Start form at: <https://www.fccc247.com>

Call Freightliner Customer Support Center at **800-385-4357** for assistance with completing this form.

### MERCEDES-BENZ SPRINTER:

**USA Dealers:** PLEASE NOTE: You must be logged in to use this link. You can find the form under the 'Resources' section at: <https://www.mbvans.com/en/upfitters/login>

Contact TMC Customer Care at **877-855-2867** EST-Indiana for the **Upfitter Token**.

**Canadian Dealers:** PLEASE NOTE: You must be logged in to use this link. You can find the form under the 'Resources' section at: <https://www.mercedes-benz-vans.ca/en/upfitter/resources>

French Canadian: <https://www.mercedes-benz-vans.ca/fr/upfitter/login>

Contact TMC Customer Care at **877-855-2867** EST-Indiana for the **Upfitter Token**.

## Component Manufacturer's Warranty Registrations

Your motorhome is equipped with features and components sourced from many manufacturers. These manufacturers provide printed materials pertaining to their products, such as operation and maintenance instructions, product warranties, and product registration forms. For your convenience, this information is collected by TMC and placed in a satchel and referenced in this Warranty Guide and in your TMC Owner's Manual as your **TMC Owner's Packet**.

Your selling dealership can assist you in completing component warranty forms and/or registrations, along with locating component model or serial numbers. Familiarize yourself with all applicable component manufacturer's warranties located in your Owner's Packet. You are responsible for ensuring the procedures for obtaining component warranty coverage and warranty repairs are followed properly.

Component Model and Serial numbers are also listed on a printed form that is attached to the inside of your motorhome. Known as the **Component Serial Data Card**, this reference is useful for keeping track of the serialized components that are factory installed in or on your motorhome by TMC. An electronic version of your Component Serial Data Card, and other useful information pertaining to your motorhome, is available to you through the on-line TMC Owners Resource document service. Refer to your Owner's Manual for this and other informational resources available to owners of TMC motorhomes.



## Change of Address or Ownership

The **National Traffic and Motor Vehicle Safety Act of 1966** requires manufacturers to be able to contact vehicle owners when a correction of a safety-related defect or noncompliance issue with an applicable federal motor vehicle safety standard becomes necessary.

To enable TMC to contact you (the current owner) with important vehicle product and safety updates, including vehicles with expired warranty coverage, please update your vehicle-related or ownership information by contacting TMC Customer Care in writing, either by faxing:

**574-294-3618** (attention: Registrations), or by emailing to: [registrations@tmc rv.com](mailto:registrations@tmc rv.com).

Include the following:

- Your legal name
- Your current mailing address (include your prior mailing address for change of address notifications)
- Your telephone number
- Your email address
- Your vehicle's 17-digit chassis vehicle identification number (VIN)
- Your TMC serial number
- Legal proof of purchase (e.g., a legible copy of your bill of sale or insurance card)
- Current motorhome odometer reading

## Thor Motor Coach® Recreational Vehicle Privacy Notice

Your Thor Motor Coach RV contains systems which allow Thor Motor Coach to collect information about your recreational vehicle, how it is used, and where it is located, and your Internet connection established through the RV's embedded equipment. Thor Motor Coach may also collect information about you, your RV, and how and where it is used through devices, applications, and services you use in connection with your Connected RV.

Some data, including location information, may be transmitted to Thor Motor Coach (directly or through its service providers) via the included Winegard modem/router whenever that device is connected to the Internet (via Wi-Fi, cellular connection, or other means). This data may be transmitted regardless if your RV is parked or in motion.

Thor Motor Coach collects, uses, stores, and/or shares this data for a number of reasons, including providing assistance to you, troubleshooting, improving its products, and to offer you products and services which may be of interest to you.

For more information and updates about what information Thor Motor Coach may collect, how we use, store, and share it, and how we protect it, please review the Thor Industries Privacy Policy (<https://www.ThorIndustries.com/privacy-policy/>) and the Winegard Company Privacy Policy (<https://rvhalo.com/info/privacy-policy>).

You may prevent sharing by disconnecting the Winegard modem/router from the electrical power source. Note: if you disable or limit information sharing with Thor Motor Coach or its partners certain product features may not work or may have limited functionality.

Thor Motor Coach RVs with connectivity features are intended for use in the United States and Canada only. Data and privacy protection laws where you use the RV may impose certain responsibilities on you with respect to your use of RV and related services. You are responsible for ensuring you comply with such laws when you use the RV and related services. You are responsible for informing those you permit to use or occupy your RV (with or without you, and including anyone to whom you loan, give, or sell the Connected RV) how data related to their use of the RV may be collected and processed.

If your Thor Motor Coach RV is equipped with a **Sirius Radio Receiver**, TMC will forward your vehicle and contact information to Sirius. They will use this information to activate your subscription.

Please contact Thor Motor Coach Customer Service at **877-855-2867** if you have any questions about this privacy notice or our privacy practices.



# Thor Motor Coach® Limited Warranty: Class A and Class C Motorhomes



## This Limited Warranty Covers

- i. **ONLY** the first retail owner and any second retail owner of the motorhome if the vehicle is registered to the second owner within the 12-month/15,000-mile limited warranty coverage period of the NEW Class A and Class C motorhome;
- ii. **ONLY** those portions of the motorhome not excluded under the section "What is Not Covered," when sold by an authorized dealership, and;
- iii. **ONLY** defects in workmanship performed or materials used to assemble those portions of your motorhome if not excluded under the section "What is Not Covered." "Defect" means the failure of the workmanship performed or materials used to conform the motorhome to Thor Motor Coach's (TMC's) design and manufacturing specifications and tolerances.

*This Limited Warranty is not transferable beyond the second retail owner. The second retail owner's warranty coverage period shall be the unexpired balance of the warranty coverage period the first retail owner received. The second retail owner should complete and submit a Thor Motor Coach Product Warranty Registration Form to notify Thor Motor Coach, Inc. of the change in ownership. TMC Warranty Registration Forms are available from TMC's Customer Service Department.*

When you request and accept the performance of warranty repairs under the terms of this Limited Warranty, you are accepting all of its terms, including, by way of example, warranty limitations and disclaimers, the forum selection clause, and the clause reducing the time period when suit must be filed for breach.

This Limited Warranty provides the exclusive economic loss remedy, whether in contract, tort, or otherwise, for any defect in the motorhome. If any warranty term or condition conflicts with your state's Uniform Commercial Code ("UCC"), your state's UCC is varied by agreement unless prohibited by your state's UCC. All common law actions seeking a "benefit of the bargain" remedy, including contract actions, are displaced by your state's UCC providing a breach of warranty cause of action to recover the "benefit of the bargain." After you've accepted the motor home, a breach of warranty action is your exclusive legal means to receive the "benefit of the bargain." You agree that by asking for and receiving warranty repairs to your motor home, you have no separate "breach of contract" claim to receive the "benefit of the bargain", regardless of any alleged "failure of essential purpose" or any other theory or claim.

## Limitation and Disclaimer of Implied Warranties

**UNLESS PROHIBITED BY LAW, THE DURATION OF THE IMPLIED WARRANTY OF MERCHANTABILITY, FOR THOSE PORTIONS OF THE MOTORHOME COVERED BY TMC'S 12-MONTH WARRANTY, WHICH ARISES BY OPERATION OF STATE LAW, IS LIMITED:**

- i. **TO THE DURATION OF THE 12-MONTH LIMITED WARRANTY;**
- ii. **IN SCOPE OF COVERAGE TO THOSE PORTIONS OF YOUR MOTORHOME COVERED BY THIS LIMITED WARRANTY;**
- iii. **TO DEFECTS EXISTING AT THE TIME OF SALE THAT SURFACED WITHIN THE DURATION OF THE IMPLIED WARRANTY OF MERCHANTABILITY, AND;**
- iv. **TO DEFECTS THAT WERE DISCOVERED AND REPORTED WITHIN THE DURATION OF THE IMPLIED WARRANTY OF MERCHANTABILITY.**

**THERE ARE NO EXPRESS WARRANTIES OR ANY IMPLIED WARRANTIES OF MERCHANTABILITY ON THOSE PORTIONS OF THE MOTORHOME EXCLUDED FROM COVERAGE. NOTWITHSTANDING THE ABOVE PROVISIONS, TMC EXPRESSLY DISCLAIMS AND EXCLUDES ANY AND ALL IMPLIED WARRANTIES AND CONDITIONS, STATUTORY OR OTHERWISE, WHERE THE MOTORHOME IS SOLD IN CANADA.**

**There is no warranty of any nature made by TMC beyond that contained in this Limited Warranty. No person has authority to enlarge, amend, or modify this Limited Warranty, except that all agreements to toll the expiration date of the warranty or the statute of limitations, unless a state statute provides otherwise, must be in writing and be assigned by a representative of Thor Motor Coach. The dealer is NOT TMC's agent. TMC is not responsible for any undertaking, representation or warranty made by any dealer or others beyond those expressly set forth within this Limited Warranty.**

*Some states and provinces do not allow limitations on how long an implied warranty lasts, so the above limitation may not apply to you.*



## Disclaimer of Consequential and Incidental Damages

**YOU, AS THE FIRST RETAIL BUYER OF THE MOTORHOME, AND ANY PERSON WHO IS AN INTENDED OR UNINTENDED USER OR BENEFICIARY OF THE MOTORHOME, SHALL NOT BE ENTITLED TO RECOVER FROM TMC ANY CONSEQUENTIAL OR INCIDENTAL DAMAGES RESULTING FROM ANY DEFECT IN THE MOTORHOME, INCLUDING FUEL AND TRANSPORTATION EXPENSES TO DELIVER THE PRODUCT TO THE SERVICING DEALER, HOTEL ROOMS, LOST WAGES OR PROFIT, DEPRECIATION, AND MOISTURE DAMAGE SUCH AS MOLD AND MILDEW, AS WELL AS RUST AND CORROSION. THE EXCLUSION OF CONSEQUENTIAL AND INCIDENTAL DAMAGES SHALL NOT BE DEPENDENT UPON WARRANTY REPAIRS SUCCESSFULLY CURING ANY DEFECT; THE EXCLUSION OF CONSEQUENTIAL AND INCIDENTAL DAMAGES SHALL SURVIVE ANY FAILURE OF THE LIMITED WARRANTY REMEDIES FULFILLING THEIR PURPOSE.**

*Some states do not allow the exclusion or limitation of consequential or incidental damages, so the above exclusions may not apply to you.*

## What Is Not Covered

- All motorhomes used for rental purposes or sold or registered outside of the United States or Canada;
- Accessories and equipment added or changed after the motorhome leaves the factory;
- Accessories and equipment that are working as designed, but which you are unhappy with the design;
- Normal wear and usage, such as fading or discoloration of fabrics, or damage caused by condensation;
- Defacing, scratching, dents and chips on any surface or fabric;
- Owner maintenance, including replacement of wiper blades, bulbs, filters, wheel alignments, programming and reprogramming of electronic devices, resealing exterior and interior sealant areas, and adjustments to slideouts (see "Care and Maintenance" section of the Owner's Manual);
- Hydraulic leveling systems, including jacks, pump and valve assembly, controllers, hoses, wiring and other system components; electric stabilization systems, including jacks, motors, controllers, and other system components; the automotive chassis and power train, including, by way of example: the engine, drive-train, steering, ride and handling, braking, wheel balance, muffler, tire wear or failure, tubes, batteries and gauges; any chassis and driveline alterations performed by MORRYDE, suspension parts provided by MORRYDE, specialty product components and fabricated parts provided by MORRYDE;
- NOTE: If your motorhome's chassis has been stretched (lengthened), the chassis manufacturer may not offer warranty coverage for any issues caused by the stretching. MORRYDE performs the stretching, including driveline alternations, and its warranty covers the work it performed and the parts used.
- Appliances and components covered by their own manufacturer's warranty including the microwave, refrigerator, ice maker, stove, oven, generator, air conditioners, DVD players, televisions, water heater, furnace, stereo, radio, compact disc player, washer, dryer, and inverter;
- Damage due to road hazards, weather, vehicular traffic, and other accidents;
- Rust and corrosion, flaking, peeling, chips, and other damage in or to the exterior or finish caused by rocks or other road hazards, the environment, including chemical off-gassing, airborne pollutants, salt, tree sap, and hail causing any damage, including but not limited to rust and corrosion.

*Component part and appliance manufacturers issue limited warranties covering those portions of the motorhome not covered by the Limited Warranty issued by TMC. To learn more about what specific components and appliances are not covered by this Limited Warranty, please contact TMC directly or review the Owner's Packet inside your motorhome.*



## Coverage Ends

Coverage ends **12 months** after the first retail owner takes delivery of the motorhome from an authorized dealership **OR** after the odometer reaches **15,000 miles (24,000 km)**, whichever occurs first. Delivery occurs when the retail owner takes physical possession of the motorhome or has alterations done to it, whichever occurs first. **ANY AND ALL CLAIMS AND CAUSES OF ACTION AGAINST TMC ARISING OUT OF THIS LIMITED WARRANTY, PURCHASE OR OPERATION OF THE MOTORHOME, INCLUDING FOR: BREACH OF THIS 12 MONTH LIMITED WARRANTY OR IMPLIED WARRANTIES, REVOCATION OF ACCEPTANCE, AND VIOLATIONS OF STATE CONSUMER PROTECTION AND DECEPTIVE TRADE LAWS MUST BE COMMENCED NOT MORE THAN 15 MONTHS AFTER THE DATE OF DELIVERY.**

## Full-time, Residential, or Business Use Warranty Restriction

If the motorhome is used for full-time recreational travel and camping or as a residence **OR** is not of the current or prior model year when the first retail owner takes delivery of the motorhome **OR** was purchased, titled, or registered in a business name or used for any commercial or business purposes other than for rental purposes, the Limited Warranty ends **90 days** after the first retail owner takes delivery of the motorhome **OR** after the odometer reaches **5,000 miles**, whichever occurs first. Motorhomes used for rental purposes have no warranty coverage. If the motorhome is purchased, titled, or registered in a business name or used for any commercial or business purpose, including rental use, TMC disclaims all implied warranties that may arise by operation of law. If the retail owner(s) has filed a federal, state or provincial tax form claiming any business tax benefit related to the motorhome, it is conclusively presumed that it was used for commercial or business purposes. **ANY CLAIMS AND CAUSES OF ACTION AGAINST TMC ARISING OUT OF THIS LIMITED WARRANTY, PURCHASE, OR OPERATION OF THE MOTORHOME, INCLUDING FOR: BREACH OF THIS 90 DAY LIMITED WARRANTY OR IMPLIED WARRANTIES, REVOCATION OF ACCEPTANCE, AND VIOLATIONS OF STATE CONSUMER PROTECTION AND DECEPTIVE TRADE LAWS MUST BE COMMENCED NOT MORE THAN 15 MONTHS AFTER THE DATE OF DELIVERY.**

*Unless prohibited by state or provincial law, repairs and promises to repair do not extend the time when you must commence a breach of warranty claim and shall not extend the warranty coverage period. Some states and provinces do not allow the reduction of the time when a claim must be commenced, so the reduction in time when a claim must be commenced may not apply to you.*

## Repairs and Maintenance

Any performance of repairs after the warranty coverage ends **OR** any performance of repairs to those portions of your motorhome excluded from coverage shall be considered "goodwill" repairs. Warranty repairs should be expected. TMC may use new or re-manufactured parts or components of substantially equal quality to complete a repair.

Repairs to defects and damage to interior or exterior surfaces, trim, or upholstery, may have been performed at the factory during assembly **OR** at the selling dealership after delivery of the motorhome to your selling dealer. Typically, any defect or damage is detected and corrected at the factory or by the selling dealer during the inspection process. If you discover any defects or damage to the motorhome when you take delivery, you **MUST** notify your dealer **OR** TMC within **TEN Days** of the date of purchase to have repairs done at no cost.

Some sealants, components, appliances, and systems require maintenance and adjustments as part of maintenance obligations, which are addressed in the documentation available from the Owners Resource section of the Thor Motor Coach website:

<https://www.thormotorcoach.com/owners>

For example, slideouts require adjustments as part of maintenance obligations. This limited warranty excludes maintenance obligations, including hydraulic leveling system recalibration, seal maintenance, and slideout adjustments. During the first 90 days of the Limited Warranty Coverage, adjustments, including but not limited to, slideouts, interior or exterior doors, drawers, and latches will be performed, at your request, at no cost by your selling dealer; thereafter, any further maintenance obligations are your exclusive responsibility.



## Events That Discharge Thor Motor Coach's Obligations Under Warranty

Thor Motor Coach, Inc. has no express or implied warranty obligations to repair any defect if;

- i. the motorhome is used for rental purposes or sold or registered outside of the United States or Canada;
- ii. the Limited Warranty is transferred beyond a second retail owner;
- iii. the motorhome is misused or neglected, damaged by accidents, or altered;
- iv. the owner fails to provide reasonable and necessary maintenance (see Owner's Manual); the motorhome is damaged by off-road use, fire theft, vandalism, explosions, or overloaded in excess of rated capacities; and,
- v. the motorhome's odometer is altered.

## Legal Remedies

**EXCLUSIVE JURISDICTION FOR DECIDING LEGAL DISPUTES RELATING TO ALLEGED BREACH OF EXPRESS WARRANTY AND BREACH OF IMPLIED WARRANTIES ARISING BY OPERATION OF LAW, AS WELL AS THOSE RELATING TO REPRESENTATIONS OF ANY NATURE, RESTS WITHIN A STATE OR FEDERAL COURT WITHIN THE STATE OF MANUFACTURE, WHICH IS INDIANA. ALSO, THIS LIMITED WARRANTY SHALL BE INTERPRETED AND CONSTRUED IN ACCORDANCE WITH THE LAWS OF THE STATE OF INDIANA. EXCEPT FOR STATE LAWS THAT ARE NOT WAIVABLE, ALL CLAIMS, CONTROVERSIES, AND CAUSES OF ACTION ARISING OUT OF OR RELATING TO THIS LIMITED WARRANTY, WHETHER SOUNDING IN CONTRACT, TORT, OR STATUTE, WILL BE GOVERNED BY THE LAWS OF THE STATE OF INDIANA, INCLUDING ITS STATUTE OF LIMITATIONS, WITHOUT GIVING EFFECT TO A CONFLICT-OF-LAW RULE THAT WOULD RESULT IN THE APPLICATION OF THE LAWS OF A DIFFERENT JURISDICTION.**

*The jury waiver and choice of law clause, as well as limitations and disclaimers of warranties, may not apply to you if applicable state or provincial law prohibits a waiver of a jury trial or enforcement of a choice of law clause resulting in a waiver of a non-waivable statutory right. For example, the State of California does not allow for the waiver of the Song-Beverly Consumer Warranty Act or pre-dispute jury trial waivers.*

## Repair Remedy

TMC's sole and exclusive obligation under this Limited Warranty is to repair or pay an authorized dealer to repair, any covered defects discovered within the warranty coverage period if, and only if, you satisfy the following three conditions:

- (1) Within ten days of your discovery of a defect, you must notify TMC or an authorized dealership, in writing (TMC's email address is: [wsupport@tmc rv.com](mailto:wsupport@tmc rv.com)), of the defect; AND
- (2) You deliver your motorhome to TMC or an authorized dealership (at your expense), provided, however, that at TMC's election, it may require you to deliver the motorhome to its facilities in Indiana or to another authorized service center or dealership for certain repairs; AND
- (3) You identify the specific defect with the motorhome to TMC or its authorized dealer as reflected in the work authorization or repair orders associated with the service visit.

Due to the seasonal nature of recreational vehicle use, your motorhome may be stored at TMC or an authorized dealer, at no cost to you, for an extended period of time before or after any warranty repairs are performed. Unless warranty repairs are actively being performed on your motorhome, your motorhome is available for use even while it is stored at TMC or an authorized dealer—such storage time is not considered time that your motorhome is out of service and unavailable to use. Should you desire to use your motorhome while it is being stored at TMC or an authorized dealer awaiting warranty repairs, please contact TMC. Similarly, if you encounter any difficulty with a dealer in getting repairs under this Limited Warranty or getting your motorhome back from a dealer, please contact TMC.



## Back-up Remedy (Final Repair Attempt)

*TMC is committed to remedying any covered defects arising during the warranty period. If the primary repair remedy fails to cure any defect after 3 repair attempts or at least 150 days while in the possession of an authorized dealer undergoing repairs, TMC offers a backup remedy to ensure covered defects are repaired.*

*To exercise the backup remedy, you must notify TMC, in writing, (TMC's email address is [wsupport@tmcrcv.com](mailto:wsupport@tmcrcv.com)), of all defect(s) that still exist with your motorhome after 3 repair attempts or at least 150 days that your motorhome has been at a dealer undergoing repairs. Within 15 days of receiving your notice, Thor will contact you to schedule repairs at TMC's factory or an independent dealer. All repairs under the backup remedy will be at Thor's sole cost and expense. Any repair(s) performed by TMC (as opposed to an authorized dealership) before the primary remedy fails does not satisfy the required exhaustion of the backup remedy. The following repairs do not count towards the 150 days: repairs not covered by the warranty (including, but not limited to, repairs made before you took delivery of your motor home; performance of maintenance, and goodwill repairs); repairs requested and performed without a scheduled appointment; and delays caused by supply chain shortages. In determining if there have been three or more repair attempts, the exact root cause of the defect must have caused the failure.*

*The repair and backup remedies are your sole and exclusive remedies under this limited warranty, and both must be exhausted and fail to fulfill their essential purpose before you are entitled to Uniform Commercial Code remedies for breach of warranty. You agree to provide TMC with written notice that the backup remedy has failed within 15 days of you taking possession of the motor home. You agree to exercise good faith in seeking repairs under the exclusive repair remedy and backup remedy, and Thor agrees to exercise good faith in scheduling and performing repairs. To avoid doubt, failing to inform TMC of issues with your motorhome before filing a lawsuit against TMC is not acting in good faith.*

*If any dispute arises under this Limited Warranty relating to whether a warranty repair has been done correctly, then, at TMC's election, a third-party inspector, selected by TMC in its sole discretion, will inspect the motorhome at TMC's sole cost and expense. Such third-party inspector's conclusions will be conclusive and binding on both TMC and you regarding any dispute relating to the Defect.*

*To allow for independent verification of the accuracy of diminished value damages opinions, you agree that the math and formula used to arrive at the opinion MUST be disclosed – an approved or historically used methodology alone is not enough. If the opinion cannot be independently verified using the math and formula disclosed, you agree that the diminished value opinion will not be used to determine the remedy for breach of express or implied warranty.*

**THIS LIMITED WARRANTY IS NOT A WARRANTY THAT PROMISES OR EXTENDS TO FUTURE PERFORMANCE BECAUSE THE WARRANTY DOES NOT MAKE A REPRESENTATION OF HOW YOUR MOTORHOME WILL PERFORM IN THE FUTURE BUT INSTEAD REPRESENTS ONLY WHAT THE REMEDY WILL BE IF A DEFECT EXISTS.**

## How To Get Service

For warranty service simply contact an authorized warranty service facility for an appointment, then deliver your motorhome (at your expense) to the authorized warranty service facility. If you need assistance in locating an authorized warranty service facility, contact TMC's Warranty Department by calling:

**877-855-2867**

The mailing address is:

**Thor Motor Coach  
P.O. Box 1486  
Elkhart, IN 46515-1486 USA**



*This page is intentionally blank*

# Thor Motor Coach® Structural and Lamination Limited Warranty: Class A and Class C Motorhomes



## This Structural and Lamination Limited Warranty Covers

- i. **ONLY** the first retail owner if purchased from an authorized dealer, and any second retail owner, if the vehicle is registered to the second owner within the 12-month/15,000-mile limited warranty coverage period, of the **NEW** Class A and Class C motorhome;
- ii **ONLY** the structure of the **NEW** motorhome and laminated sidewalls as defined under the section "What is Covered," and;
- iii **ONLY** defects in workmanship performed or materials used to assemble the structure of your motorhome and the laminated sidewalls. "Defect" means the failure of the workmanship performed or materials used to conform the motorhome's structure or laminated sidewalls to Thor Motor Coach's (TMC's) design and manufacturing specifications and tolerances.

*The Structural and Lamination Limited Warranty is not transferable beyond the second retail owner. The second retail owner's warranty coverage period is the unexpired balance of the warranty coverage period the first retail owner received. The second retail owner should complete a Thor Motor Coach Product Warranty Registration Form to notify TMC of their ownership of the motorhome. The form can be found in this Warranty Guide or available from TMC's Warranty Department.*

When you request and accept the performance of warranty repairs under the terms of this Limited Warranty, you are accepting all terms of this Limited Warranty, including by way of example, warranty limitations and disclaimers, the forum selection clause and the clause reducing the time period when suit must be filed for breach.

This Limited Warranty provides the exclusive economic loss remedy, whether in contract, tort, or otherwise, for any defect in the motorhome. If any warranty term or condition conflicts with your state's Uniform Commercial Code ("UCC"), your state's UCC is varied by agreement unless prohibited by your state's UCC. All common law actions seeking a "benefit of the bargain" remedy, including contract actions, are displaced by your state's UCC providing a breach of warranty cause of action to recover the "benefit of the bargain." After you've accepted the motor home, a breach of warranty action is your exclusive legal means to receive the "benefit of the bargain." You agree that by asking for and receiving warranty repairs to your motor home, you have no separate "breach of contract" claim to receive the "benefit of the bargain", regardless of any alleged "failure of essential purpose" or any other theory or claim.

## Limitation and Disclaimer of Implied Warranties

**UNLESS PROHIBITED BY LAW, THE DURATION OF THE IMPLIED WARRANTIES FOR THOSE PORTIONS OF THE MOTORHOME COVERED BY THE STRUCTURAL WARRANTY, WHICH ARISES BY OPERATION OF STATE LAW, ARE LIMITED:**

- i. **TO THE DURATION OF THE STRUCTURAL AND LAMINATION LIMITED WARRANTY;**
- ii. **IN SCOPE OF COVERAGE TO THE STRUCTURE AND LAMINATED SIDEWALLS OF YOUR MOTORHOME;**
- iii. **DEFECTS EXISTING AT THE TIME OF SALE THAT SURFACED WITHIN THE DURATION OF THE IMPLIED WARRANTY OF MERCHANTABILITY, AND;**
- iv. **DEFECTS DISCOVERED AND REPORTED WITHIN THE DURATION OF THE LIMITED STRUCTURAL AND LAMINATION WARRANTY.**

**THERE ARE NO EXPRESS WARRANTIES OR ANY IMPLIED WARRANTIES OF MERCHANTABILITY ON THOSE PORTIONS EXCLUDED FROM COVERAGE. NOTWITHSTANDING THE ABOVE PROVISIONS, TMC EXPRESSLY DISCLAIMS AND EXCLUDES ANY AND ALL IMPLIED WARRANTIES AND CONDITIONS, STATUTORY OR OTHERWISE, WHERE THE MOTORHOME IS SOLD IN CANADA.**

**There is no warranty of any nature made by TMC beyond that contained in the 12-month/15,000 Limited Warranty and this Structural and Lamination Limited Warranty. No person has the authority to enlarge, amend, or modify this Structural and Lamination Limited Warranty, except that all agreements to toll the expiration date of the warranty or the statute of limitations, unless a state statute provides otherwise, must be in writing and be assigned by a representative of Thor Motor Coach. The dealer is NOT TMC's agent. TMC is not responsible for any undertaking, representation or warranty made by any dealer or others beyond those expressly set forth within this Structural and Lamination Limited Warranty.**

*Some states and provinces do not allow limitations on how long an implied warranty lasts, so the above limitation may not apply to you.*



## Disclaimer of Consequential and Incidental Damages

**YOU, AS THE FIRST RETAIL BUYER OF THE MOTORHOME, ANY PERSON TO WHOM THE MOTORHOME IS TRANSFERRED, AND ANY PERSON WHO IS AN INTENDED OR UNINTENDED USER OR BENEFICIARY OF THE MOTORHOME, SHALL NOT BE ENTITLED TO RECOVER FROM TMC ANY CONSEQUENTIAL OR INCIDENTAL DAMAGES RESULTING FROM ANY DEFECT IN THE MOTORHOME, INCLUDING FUEL AND TRANSPORTATION EXPENSES TO DELIVER THE PRODUCT TO THE SERVICING DEALER, HOTEL ROOMS, LOST WAGES OR PROFIT, DEPRECIATION, AND MOISTURE DAMAGE SUCH AS MOLD AND MILDEW, AS WELL AS RUST AND CORROSION. THE EXCLUSION OF CONSEQUENTIAL AND INCIDENTAL DAMAGES IS NOT DEPENDENT UPON WARRANTY REPAIRS SUCCESSFULLY CURING ANY DEFECT; THE EXCLUSION OF CONSEQUENTIAL AND INCIDENTAL DAMAGES SURVIVES ANY FAILURE OF THE STRUCTURAL AND LAMINATION LIMITED WARRANTY REMEDIES FULFILLING THEIR PURPOSE.**

*Some states do not allow the exclusion or limitation of consequential or incidental damages, so the above exclusions may not apply to you.*

## What is Covered

**This Structural and Lamination Limited Warranty** covers **ONLY** the steel or aluminum frame structure of the sidewalls (excluding fasteners used to attach the sidewalls to the steel and aluminum frame structure, slideouts and ramp doors), roof, rear wall, front wall, and floor **AND** the exterior laminated surfaces of the sidewalls (excluding fasteners used to attach the sidewalls to the steel and aluminum frame structure, slideouts and ramp doors), roof, rear wall, front wall, and floor.

### Structural Coverage:

This warranty covers only defects in materials and construction, including welds of the frame structure and the exterior walls. Coverage excludes damage caused by water intrusion, corrosion, damage due to road hazards, accidents, and other intentional or unintentional blunt forces.

The Structural Limited Warranty coverage ends **12 years** after the first retail owner takes delivery of the motorhome from an authorized dealership **OR** after the first **100,000 miles** of use, whichever occurs first. Delivery occurs when the retail owner takes physical possession of the motorhome or has alterations done to it, whichever occurs first. **ANY CLAIMS AND CAUSES OF ACTION AGAINST TMC ARISING OUT OF THIS LIMITED WARRANTY, PURCHASE, OR OPERATION OF THE MOTORHOME, INCLUDING FOR: BREACH OF THIS 12 YEAR OR 100,000 MILE STRUCTURAL LIMITED WARRANTY OR IMPLIED WARRANTIES, REVOCATION OF ACCEPTANCE, AND VIOLATIONS OF STATE CONSUMER PROTECTION AND DECEPTIVE TRADE LAWS MUST BE COMMENCED NOT MORE THAN 12 YEARS AND 90 DAYS AFTER THE DATE OF DELIVERY.**

### Lamination Coverage:

This warranty covers only material and construction defects of the exterior laminated surfaces, including sidewalls (excluding fasteners, slideouts, and ramp doors), roof, front wall, rear wall, and floor, which consists of a fiberglass and resin material, gelcoating, along with a wooden or other ply material (for structural rigidity). This limited warranty does **NOT** cover fasteners, the roof or floor surface material, or material construction (TPO, rubberized or other synthetic roof covering; vinyl, carpet, tile, rubberized or other synthetic floor coverings). Coverage excludes damage caused by water intrusion, corrosion, damage due to road hazards accidents, and other intentional or unintentional blunt forces.

The Lamination Limited Warranty coverage ends **6 years** after the first retail owner takes delivery of the motorhome from an authorized dealership **OR** after the first **50,000 miles** of use, whichever occurs first. **ANY CLAIMS AND CAUSES OF ACTION AGAINST TMC ARISING OUT OF THIS LIMITED WARRANTY, PURCHASE OR OPERATION OF THE MOTORHOME, INCLUDING FOR: BREACH OF THIS 6 YEAR OR 50,000-MILE LAMINATION LIMITED WARRANTY OR IMPLIED WARRANTIES, REVOCATION OF ACCEPTANCE, AND VIOLATIONS OF STATE CONSUMER PROTECTION AND DECEPTIVE TRADE LAWS MUST BE COMMENCED NOT MORE THAN 6 YEARS AND 90 DAYS AFTER THE DATE OF DELIVERY.**





## Requirements to Retain Warranty Coverage

To retain warranty coverage under the Structural and Lamination Limited Warranty, **ANNUAL INSPECTIONS by an authorized RV dealer or RV repair service, approved by TMC, are required.** Proof of annual inspections must be retained by the owner of the motorhome and presented to TMC as a condition for warranty coverage. Inspections must be completed on or before the first anniversary of the original purchase of the motorhome and continue annually thereafter on or before successive anniversaries of the original purchase.

## Full-time, Residential, or Business Use Warranty Restriction

If the motorhome is not of the current or prior model year when the first retail owner takes delivery of the motorhome **OR** the motorhome has been registered in a business name or used for any commercial or business purposes other than for rental purposes, the Structural and Lamination Limited Warranty, and any implied warranty arising by operation of law, ends **90 days** after the first retail owner takes delivery of the motorhome **OR** after the odometer reaches **5,000 miles**, whichever occurs first. Motorhomes used for rental purposes have no warranty coverage. If the motorhome is purchased, titled, or registered in a business name or used for any commercial or business purpose, including rental use, TMC disclaims any implied warranty of merchantability that may arise by operation of law. If the retail owner(s) has filed a federal, state, or provincial tax form claiming any business tax benefit related to the motorhome, it is conclusively presumed that the motorhome was used for commercial or business purposes. **ANY CLAIMS AND CAUSES OF ACTION AGAINST TMC ARISING OUT OF THIS LIMITED WARRANTY, PURCHASE OR OPERATION OF THE MOTORHOME, INCLUDING FOR: BREACH OF THIS 90 DAY STRUCTURAL AND LAMINATION LIMITED WARRANTY OR IMPLIED WARRANTIES, REVOCATION OF ACCEPTANCE, AND VIOLATIONS OF STATE CONSUMER PROTECTION AND DECEPTIVE TRADE LAWS MUST BE COMMENCED NOT MORE THAN 15 MONTHS AFTER THE DATE OF DELIVERY.**

*Unless prohibited by state or provincial law, repairs and promises to repair do not extend the time when you must commence a breach of warranty claim and shall not extend the Structural and Lamination Limited Warranty coverage period. Some states and provinces do not allow a reduction of the time when a claim must be commenced, so the reduction in time when a claim must be commenced may not apply to you. Any performance of repairs after the Structural and Lamination Limited Warranty coverage ends or any performance of repairs to those portions of your motorhome excluded from coverage by the Structural and Lamination Limited Warranty shall be considered "goodwill" repairs. TMC may use new or re-manufactured parts or components of substantially equal quality to complete a repair.*

## Events That Discharge Thor Motor Coach's Obligations Under Warranty

Thor Motor Coach, Inc. has no express or implied warranty obligations to repair any defect if;

- i. the motorhome is used for rental purposes or sold or registered outside of the United States or Canada;
- ii. the Limited Warranty is transferred beyond a second retail owner;
- iii. the motorhome is misused or neglected, damaged by accidents, or altered;
- iv. the owner fails to provide reasonable and necessary maintenance (see Owner's Manual); the motorhome is damaged by off-road use, fire theft, vandalism, explosions, or overloaded in excess of rated capacities; and,
- v. the motorhome's odometer is altered.



## Legal Remedies

**EXCLUSIVE JURISDICTION FOR DECIDING LEGAL DISPUTES RELATING TO ALLEGED BREACH OF EXPRESS WARRANTY AND BREACH OF IMPLIED WARRANTIES ARISING BY OPERATION OF LAW, AS WELL AS THOSE RELATING TO REPRESENTATIONS OF ANY NATURE, RESTS WITHIN A STATE OR FEDERAL COURT WITHIN THE STATE OF MANUFACTURE, WHICH IS INDIANA. ALSO, THIS STRUCTURAL AND LAMINATION LIMITED WARRANTY SHALL BE INTERPRETED AND CONSTRUED IN ACCORDANCE WITH THE LAWS OF THE STATE OF INDIANA. EXCEPT FOR STATE LAWS THAT ARE NOT WAIVABLE, ALL CLAIMS, CONTROVERSIES, AND CAUSES OF ACTION ARISING OUT OF OR RELATING TO THIS STRUCTURAL AND LAMINATION LIMITED WARRANTY, WHETHER SOUNDING IN CONTRACT, TORT, OR STATUTE, WILL BE GOVERNED BY THE LAWS OF THE STATE OF INDIANA, INCLUDING ITS STATUTE OF LIMITATIONS, WITHOUT GIVING EFFECT TO A CONFLICT-OF-LAW RULE THAT WOULD RESULT IN THE APPLICATION OF THE LAWS OF A DIFFERENT JURISDICTION.**

*The jury waiver and choice of law clause, as well as limitations and disclaimers of warranties, may not apply to you if applicable state or provincial law prohibits a waiver of a jury trial or enforcement of a choice of law clause resulting in a waiver of a non-waivable statutory right. For example, the State of California does not allow for the waiver of the Song-Beverly Consumer Warranty Act or predispute jury trial waivers.*

## Repair Remedy

TMC's sole and exclusive obligation under this Limited Warranty is to repair or pay an authorized dealer to repair, any covered defects discovered within the warranty coverage period if, and only if, you satisfy the following three conditions:

- (1) Within ten days of your discovery of a defect, you must notify TMC or an authorized dealership, in writing (TMC's email address is: [wsupport@tmcrv.com](mailto:wsupport@tmcrv.com)), of the defect; AND
- (2) You deliver your motorhome to TMC or an authorized dealership (at your expense), provided, however, that at TMC's election, it may require you to deliver the motorhome to its facilities in Indiana or to another authorized service center or dealership for certain repairs; AND
- (3) You identify the specific defect with the motorhome to TMC or its authorized dealer as reflected in the work authorization or repair orders associated with the service visit.

Due to the seasonal nature of recreational vehicle use, your motorhome may be stored at TMC or an authorized dealer, at no cost to you, for an extended period of time before or after any warranty repairs are performed. Unless warranty repairs are actively being performed on your motorhome, your motorhome is available for use even while it is stored at TMC or an authorized dealer—such storage time is not considered time that your motorhome is out of service and unavailable to use. Should you desire to use your motorhome while it is being stored at TMC or an authorized dealer awaiting warranty repairs, please contact TMC. Similarly, if you encounter any difficulty with a dealer in getting repairs under this Limited Warranty or in getting your motorhome back from a dealer, please contact TMC.

## Back-up Remedy (Final Repair Attempt)

*TMC is committed to remedying any covered defects arising during the warranty period. If the primary repair remedy fails to cure any defect after 3 repair attempts or at least 150 days while in the possession of an authorized dealer undergoing repairs, TMC offers a backup remedy to ensure covered defects are repaired.*

*To exercise the backup remedy, you must notify TMC, in writing, (TMC's email address is [wsupport@tmcrv.com](mailto:wsupport@tmcrv.com)), of all defect(s) that still exist with your motorhome after 3 repair attempts or at least 150 days that your motorhome has been at a dealer undergoing repairs. Within 15 days of receiving your notice, Thor will contact you to schedule repairs at TMC's factory or an independent dealer. All repairs under the backup remedy will be at Thor's sole cost and expense. Any repair(s) performed by TMC (as opposed to an authorized dealership) before the primary remedy fails does not satisfy the required exhaustion of the backup remedy. The following repairs do not count towards the 150 days: repairs not covered by the warranty (including, but not limited to, repairs made before you took delivery of your motor home; performance of maintenance, and goodwill repairs); repairs requested and performed without a scheduled appointment; and delays caused by supply chain shortages. In determining if there have been three or more repair attempts, the exact root cause of the defect must have caused the failure.*



*The repair and backup remedies are your sole and exclusive remedies under this limited warranty, and both must be exhausted and fail to fulfill their essential purpose before you are entitled to Uniform Commercial Code remedies for breach of warranty. You agree to provide TMC with written notice that the backup remedy has failed within 15 days of you taking possession of the motor home. You agree to exercise good faith in seeking repairs under the exclusive repair remedy and backup remedy, and Thor agrees to exercise good faith in scheduling and performing repairs. To avoid doubt, failing to inform TMC of issues with your motorhome before filing a lawsuit against TMC is not acting in good faith.*

*If any dispute arises under this Limited Warranty relating to whether a warranty repair has been done properly, then, at TMC's election, a third-party inspector, selected by TMC in its sole discretion, will inspect the motorhome at TMC's sole cost and expense. Such third-party inspector's conclusions will be conclusive and binding on both TMC and you regarding any dispute relating to the Defect.*

To allow for independent verification of the accuracy of diminished value damages opinions, you agree that the math and formula used to arrive at the opinion MUST be disclosed – an approved or historically used methodology alone is not enough. If the opinion cannot be independently verified using the math and formula disclosed, you agree that the diminished value opinion will not be used to determine the remedy for breach of express or implied warranty.

**THIS STRUCTURAL AND LAMINATION LIMITED WARRANTY IS NOT A WARRANTY THAT PROMISES OR EXTENDS TO FUTURE PERFORMANCE BECAUSE THE WARRANTY DOES NOT MAKE A REPRESENTATION OF HOW YOUR MOTORHOME WILL PERFORM IN THE FUTURE BUT INSTEAD REPRESENTS ONLY WHAT THE REMEDY WILL BE IF A DEFECT EXISTS.**

## How To Get Service

For warranty service simply contact an authorized warranty service facility for an appointment, then deliver your motorhome (at your expense) to the authorized warranty service facility. If you need assistance in locating an authorized warranty service and/or inspectiWon facility, contact TMC's Warranty Department by calling:

**877-855-2867**

*NOTE to dealer/service center:*

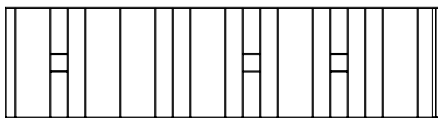
Obtain annual inspection documents from TMC Customer Service: **877-855-2867**

The mailing address is:

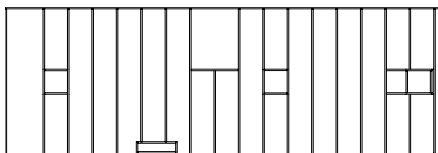
**Thor Motor Coach  
P.O. Box 1486  
Elkhart, IN 46515-1486 USA**

## Examples of TMC Structural Construction

Typical roof structure

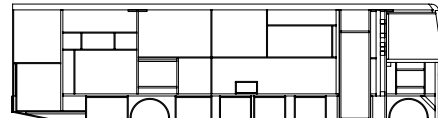


Class A motorhome

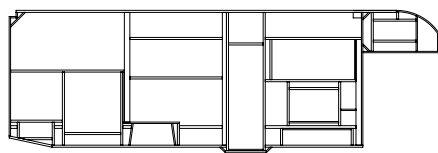


Class C motorhome

Typical sidewall structure

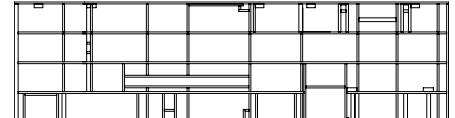


Class A motorhome

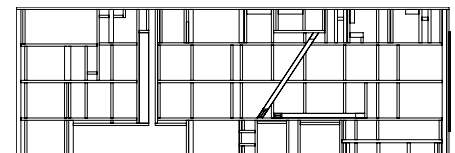


Class C motorhome

Typical floor structure



Class A motorhome



Class C motorhome

NOTE: Illustrations not-to-scale



*This page is intentionally blank*



# Warranty Service Log

Date	Odometer	Description

# Warranty Inspection Log

Date of Delivery:				
Anniversary Date	Odometer	Inspected By:	Structure Inspection Date	Lamination Inspection Date
Year 1				
Year 2				
Year 3				
Year 4				
Year 5				
Year 6				
Year 7				
Year 8				
Year 9				
Year 10				
Year 11				
Year 12				



## Maintenance Schedule for 12 Year Structural / 6 year Lamination Warranty

ITEM	Every Trip	Every Month	Every 3 Months	Every 6 Months	ANNUALLY*	Prior to Storage	As Required	PROCEDURE TO BE PERFORMED: Maintenance schedules are minimum requirements. Heavy use, unusual temperatures or humidity, or other extreme conditions may require more frequent maintenance.
Roof & Components			X		X	X	X	Inspect & reseal roof & exterior attachment areas.
			X		X	X	X	Clean Roof.
					X		X	Lubricate roof vent mechanism w/ light oil. Clean as needed.
Fiberglass Exterior		X			X			Wash with warm water & mild detergent.
					X			Wax with liquid or nonabrasive wax.
Windows & Doors		X			X			Check vinyl seals when washing exterior.
			X		X			Check seals for damage & repair as needed.
			X		X			Lubricate door hinges & step components with spray grease.
					X			Adjust & lube with graphite or light oil.
					X			Lubricate door locks & striker pockets, exterior components.
Seals & Adhesives		X			X			Inspect & reseal if necessary.**
Seals & Cracks			X		X			Inspect entire coach for seals that are cracked or coming away from the fixtures every 3-to-6 months. It is recommended to focus specifically where there are any mounted fixtures and where the roof, side walls, and front/rear caps meet (vertically and horizontally).
Exterior Bottom of Sidewalls				X	X			Inspect the exterior bottom of the sidewalls for loose or deteriorating extrusions every 6 months, depending on atmospheric conditions.
							X	Keep motorhome covered or in an enclosed building when not in use to avoid exposure of atmospheric elements.
Structural	X				X			Wash underbelly of motorhome after travel to remove dirt and grime that may cause corrosion.
	X				X			Avoid/Inspect for exceeding weight/towing capacities.
	X				X			Avoid/Inspect for off-balance overloading of personal/traveling contents.
	X				X			Avoid/Inspect for excessive flexing of the motorhome. Ensure proper leveling calibration.
	X				X			Avoid/Inspect for under or over-inflating tires while traveling on rough roads. This could cause continuous fatigue to certain areas of the frame that could lead to stress cracks and eventual frame failure.
DEALER INSPECTION					X			<b>MANDATORY FOR 6 YEAR LAMINATION &amp; 12 YEAR STRUCTURAL WARRANTY</b>

\* Annual Dealer Inspection includes these items

\*\* DO NOT use silicone as a sealant. Recommended sealant: Dicor for roofs and Geocel 2300 for body sealant.



THOR MOTOR COACH® WARRANTY INSPECTION FORM

Vehicle Identification Number (VIN):  
Customer Name:

Annual Dealership Inspection Sheet	Pass (✓)	Fail (✓)	Repaired If Failed (Yes or No)	PROCEDURE TO BE PERFORMED: Maintenance Schedules are minimum requirements. Heavy use, unusual temperatures or humidity or other extreme conditions may require more frequent maintenance.	Notes
Roof & Components				Inspect & reseal roof & exterior attachment areas.	
Roof & Components				Verify that the motorhome has a clean roof.	
Roof & Components				Lubricate roof vent mechanism w/light oil. Clean as needed.	
Fiberglass Exterior				Inspect sidewalls for maintained condition or damage (Wash with warm water and mild detergent. Wax with liquid nonabrasive wax).	
Windows & Doors				Check vinyl seals.	
Windows & Doors				Check seals for damage.	
Windows & Doors				Inspect to confirm that door hinges & step components are lubricated properly.	
Windows & Doors				Inspect to confirm that door locks & striker pockets are lubricated properly.	
Seals & Adhesives				Inspect	
Seals & Cracks				Inspect entire coach for seals that are cracked or coming away from the fixtures. It is recommended to focus specifically where there are any mounted fixtures and where the roof, sidewalls, and front/rear caps meet (vertically and horizontally).	
Exterior Bottom of Sidewalls				Inspect the exterior bottom of the sidewalls for loose or deteriorating extrusions, depending on atmospheric conditions.	
Structural				Inspect underbelly of motorhome for dirt, grime, or corrosion.	
Structural				Inspect for exceeding weight/towing capacities.	
Structural				Inspect for off-balance and/or overloading of personal traveling contents.	
Structural				Inspect for excessive flexing of the motorhome. Ensure proper leveling calibration.	
Structural				Inspect for under or over-inflated tires.	
Dealership Name and Address:					SIGNATURE OF INSPECTOR:
MANDATORY FOR 6 YEAR LAMINATION / 12 YEAR STRUCTURAL WARRANTY Email to: <a href="mailto:wsupport@tmc rv.com">wsupport@tmc rv.com</a> within 30 days of the inspection					DATE:



*This page is intentionally blank*



Cut on dotted line



# Thor Motor Coach® Product Warranty Registration Form

## PRODUCT WARRANTY REGISTRATION FORM INSTRUCTIONS



Scan to View Your  
Thor Motor Coach  
Warranty

**IMPORTANT! THE PURCHASER IS REQUIRED TO READ THIS DOCUMENT.** The selling dealership is not authorized by Thor Motor Coach (TMC) to deliver the vehicle to you until it has reviewed both sides of this form with you – confirmed by the selling dealership's signature on both sides of this form. After completing both sides of this form, the selling dealership will:

1. Give a legible copy of the completed form to the purchaser.
2. Register the vehicle warranty on-line using TMC's Dealer Portal **OR** send a legible copy of both sides of this completed form to Thor Motor Coach within 15 days after vehicle delivery. Email to [registrations@tmcrcv.com](mailto:registrations@tmcrcv.com), or fax to **574-294-3618**, or mail to: **Thor Motor Coach, P.O. Box 1486, Elkhart IN 46515-1486**. Call **877-855-2867** for assistance.
3. Retain the original form in your dealership records. (Note: This original form must be made available to TMC upon request).
4. Purchaser email address is **REQUIRED** for National Highway Transportation Safety Administration (NHTSA) compliance.

**CALIFORNIA CONSUMERS:** Thor Motor Coach has elected to follow the procedures described in CA Code of Civil Procedure, Section 871.20, et seq., regarding pre-litigation notice requirements for consumer claims brought pursuant to the Song-Beverly Consumer Warranty Act. To comply with these pre-litigation notice requirements (described at CA Code of Civil Procedure, Section 871.24), written notice can be sent to Thor Motor Coach, to the attention of Consumer Affairs - either via email or by certified or registered mail. Please include an address where a confirmation receipt can be sent to you.

EMAIL: [wsupport@tmcrcv.com](mailto:wsupport@tmcrcv.com)

MAILING ADDRESS: Thor Motor Coach, P.O. Box 1486, Elkhart IN 46515-1486

## VEHICLE INFORMATION (PLEASE PRINT)

MOTORHOME CLASS (PLEASE CHECK APPROPRIATE BOX):

☐ Class C Motorhome ☐ Class A Gas Motorhome ☐ Class A Diesel Motorhome ☐ Class B Motorhome

MODEL YEAR MAKE / BRAND NAME MODEL / FLOOR PLAN ODOMETER ☐ KM ☐ MILES

17-DIGIT CHASSIS VIN 14-DIGIT SERIAL NUMBER

## PURCHASER INFORMATION (PLEASE PRINT)

PURCHASER'S FIRST NAME MI LAST NAME PURCHASER'S PHONE

PRINT PURCHASER'S EMAIL (REQUIRED)

CO-PURCHASER'S FIRST NAME (REQUIRED, OR PRINT "NOT APPLICABLE" ON THE ABOVE LINE) MI LAST NAME CO-PURCHASER'S PHONE

CO-PURCHASER'S EMAIL (REQUIRED, OR PRINT "NOT APPLICABLE" ON THE ABOVE LINE)

PURCHASER'S STREET ADDRESS CITY, STATE OR PROVINCE, ZIP OR POSTAL CODE COUNTRY

PURCHASER'S MAILING ADDRESS (IF DIFFERENT FROM ABOVE) CITY, STATE OR PROVINCE, ZIP OR POSTAL CODE COUNTRY

## SELLING DEALERSHIP INFORMATION (PLEASE PRINT)

DEALER ACCT NO. SELLING DEALERSHIP NAME SELLING DEALERSHIP CITY, STATE OR PROVINCE, COUNTRY

SALESPERSON'S NAME SALESPERSON'S PHONE NUMBER AND EXT.

Cut on dotted line



# Thor Motor Coach® Product Warranty Registration Form

## PURCHASER AND SELLING DEALERSHIP VEHICLE INSPECTION CHECKLIST

- |  |   |  |  |  |  |  |  |  |  |
|--|---|--|--|--|--|--|--|--|--|
| <input type="checkbox"/> Exterior and interior fit and finish  | <input type="checkbox"/> Operate 120V generator (if equipped)   |  |  |  |  |  |  |  |  |
| <input type="checkbox"/> Rust or corrosion on chassis or frame <input type="checkbox"/> No <input type="checkbox"/> Yes  | <input type="checkbox"/> Operate battery power system (if equipped)   |  |  |  |  |  |  |  |  |
| <input type="checkbox"/> Operate all doors and windows, including locks  | <input type="checkbox"/> Operate all entertainment systems, dash radio/camera/navigation  |  |  |  |  |  |  |  |  |
| <input type="checkbox"/> Review battery switch, electrical panel, and shore power  | <input type="checkbox"/> Operate all awnings, slideouts, and electric bed lift systems (if equipped)  |  |  |  |  |  |  |  |  |
| <input type="checkbox"/> Review operation of propane gas valve and regulator   | <input type="checkbox"/> Operate SkyBunk (Class B sleeper roof, if equipped)  |  |  |  |  |  |  |  |  |
| <input type="checkbox"/> Operation and maintenance of all appliances:  | <input type="checkbox"/> Review operation of all water system components, including water pump, faucets, sinks, shower, toilet, water panels, holding tanks, water hook-ups, and sewage disposal  |  |  |  |  |  |  |  |  |
| <input type="checkbox"/> Furnace and thermostat <input type="checkbox"/> Air conditioner(s)  | <input type="checkbox"/> Review TMC Owner's Manual and TMC Limited Warranties with owner  |  |  |  |  |  |  |  |  |
| <input type="checkbox"/> Water heater <input type="checkbox"/> Refrigerator  | <input type="checkbox"/> Check that all wheel lugs are tight (torqued to spec) and tire pressures are correct   |  |  |  |  |  |  |  |  |
| <input type="checkbox"/> Cooktop / Range <input type="checkbox"/> Microwave Oven   | <input type="checkbox"/> Test drive vehicle   |  |  |  |  |  |  |  |  |
| <input type="checkbox"/> Operate all leveling and stabilizing systems (if equipped)  | <input type="checkbox"/> Odometer reading as observed by customer is: <table border="1" style="display: inline-table;"><tr><td> </td><td> </td><td> </td><td> </td><td> </td><td> </td><td> </td><td> </td></tr></table> <input type="checkbox"/> KM <input type="checkbox"/> MILES |  |  |  |  |  |  |  |  |
|  |   |  |  |  |  |  |  |  |  |
| <input type="checkbox"/> I (the purchaser) have completed the above inspection with the selling dealership and have taken a test drive at the time of purchase. I note the following issues (if necessary, use a separate piece of paper): | <input type="checkbox"/> Dealer has answered all questions from new owner pertaining to this vehicle  |  |  |  |  |  |  |  |  |

## PURCHASER AND SELLING DEALERSHIP MUST COMPLETE THE SECTION BELOW

**IMPORTANT!** The purchaser(s) and selling dealership signatures below indicate their understanding and acceptance of TMC's terms and conditions of the Thor Motor Coach Limited Warranty and Thor Motor Coach Structural and Lamination Limited Warranty. The selling dealer is required to complete and return the TMC Product Warranty Registration Form to Thor Motor Coach within 15 days of delivery of the motorhome to its new owner. TMC's Limited Warranties are activated on the date of delivery of the new motorhome to the purchaser(s).

NOTE: Failure to file the Product Warranty Registration Form with TMC will not affect your rights under the applicable TMC limited warranty as long as the purchaser(s) can present proof of purchase and proof of delivery date to TMC, but it can cause delays in obtaining the benefits of the applicable TMC limited warranty, and it may inhibit any servicing facility's ability to provide proper repairs and/or parts replacement.

NOTE: The Thor Motor Coach Structural and Lamination Limited Warranty is not applicable to Class B motorhomes.

- Before I purchased my motorhome, I received, read and agreed to the terms and conditions of the Thor Motor Coach Limited Warranty and the Thor Motor Coach Structural and Lamination Limited Warranty. I understand I can read and print a copy of the Owner's Manual and Limited Warranties from the Thor Motor Coach website. If for any reason I did not receive, read and agree to the terms and conditions of the Thor Motor Coach Limited Warranty and the Thor Motor Coach Structural and Lamination Limited Warranty before closing the purchase of the motorhome, I understand and agree that by requesting and accepting the performance of Warranty repairs under the terms of the Limited Warranties, I am accepting all terms and conditions of the Limited Warranties, including by way of example, warranty limitations and disclaimers, the forum selection clause and the clause reducing the time period when suit must be filed for breach.
- I understand and agree that the selling dealership is not an agent for TMC, but is an independent entity.
- I understand and acknowledge that the chassis and components and appliances that are covered by a warranty issued by their manufacturer are excluded from coverage under the terms of Thor Motor Coach Limited Warranty and the Thor Motor Coach Structural and Lamination Limited Warranty.
- I acknowledge and agree that, before purchasing my motorhome, I inspected or was given an opportunity to inspect my motorhome, took a test drive of my motorhome, and disclosed in writing to the selling dealership all defects and damage that I discovered during my inspection and test drive.
- I understand and agree to the reduction of the time period when any claim and cause of action against TMC arising out of the Limited Warranty, purchase or operation of the motorhome, must be commenced as set forth in the Thor Motor Coach Limited Warranty and the Thor Motor Coach Structural and Lamination Limited Warranty.
- **EXCEPT FOR STATE LAWS THAT ARE NOT WAIVABLE, I AGREE THAT ALL CLAIMS, CONTROVERSIES AND CAUSES OF ACTION ARISING OUT OF OR RELATING TO THIS LIMITED WARRANTY, WHETHER SOUNDING IN CONTRACT, TORT, OR STATUTE, WILL BE GOVERNED BY THE LAWS OF THE STATE OF INDIANA, INCLUDING ITS STATUTE OF LIMITATIONS, WITHOUT GIVING EFFECT TO A CONFLICT-OF-LAW RULE THAT WOULD RESULT IN THE APPLICATION OF THE LAWS OF A DIFFERENT JURISDICTION.**
- **TO THE EXTENT PERMITTED BY LAW, I AGREE THAT ANY AND ALL ACTIONS OF ANY KIND RELATED TO OUR MOTORHOME SHALL BE DECIDED BY A JUDGE RATHER THAN BY A JURY.**
- **I UNDERSTAND THAT EXCLUSIVE JURISDICTION FOR DECIDING LEGAL DISPUTES RELATING TO ALLEGED BREACH OF EXPRESS WARRANTY AND BREACH OF IMPLIED WARRANTIES ARISING BY OPERATION OF LAW AS WELL AS THOSE RELATING TO REPRESENTATIONS OF ANY NATURE RESTS WITHIN A STATE OR FEDERAL COURT WITHIN THE STATE OF MANUFACTURE, WHICH IS INDIANA. IF THERE IS A CONFLICT BETWEEN THIS FORUM SELECTION CLAUSE AND ANOTHER PARTY'S FORUM SELECTION CLAUSE, THIS FORUM SELECTION CLAUSE CONTROLS.**
- The jury waiver and choice of law clause, as well as limitations and disclaimers of warranties, may not apply to you if applicable state or provincial law prohibits a waiver of a jury trial or enforcement of a choice of law clause resulting in a waiver of a non-waivable statutory right. For example, the State of California does not allow for the waiver of the Song-Beverly Consumer Warranty Act or predispute jury trial waivers.
- Thor Motor Coach® Recreational Vehicle Privacy Notice: My new RV is equipped with a Winegard modem and router ("Device") which may collect and transmit information about my RV, its location and how it is used, and me whenever the Device is connected to the Internet via Wi-Fi or an optional cellular connection. I understand I should review the Thor Industries Privacy Policy: ([www.ThorIndustries.com/privacy-policy/](http://www.ThorIndustries.com/privacy-policy/)) and the Winegard Company Privacy Policy: ([www.rvhale.com/info/privacy-policy](http://www.rvhale.com/info/privacy-policy)) for further information.
- I (we) the purchaser(s) agree to receive emails, telephone calls, or other forms of contact from Thor Motor Coach.

DATE OF MOTORHOME DELIVERY TO PURCHASER (REQUIRED)

PURCHASER SIGNATURE (REQUIRED)

DATE SIGNED BY PURCHASER (REQUIRED)

CO-PURCHASER SIGNATURE (REQUIRED, OR PRINT "NOT APPLICABLE") ON THE ABOVE LINE

DATE SIGNED BY CO-PURCHASER (REQUIRED, OR PRINT "NOT APPLICABLE") ON THE ABOVE LINE

SELLING DEALERSHIP SALES PERSON SIGNATURE (REQUIRED)

DATE SIGNED BY SELLING DEALERSHIP SALES PERSON (REQUIRED)





[thormotorcoach.com](http://thormotorcoach.com)

TMC Part Number 0588977, Revision 250801